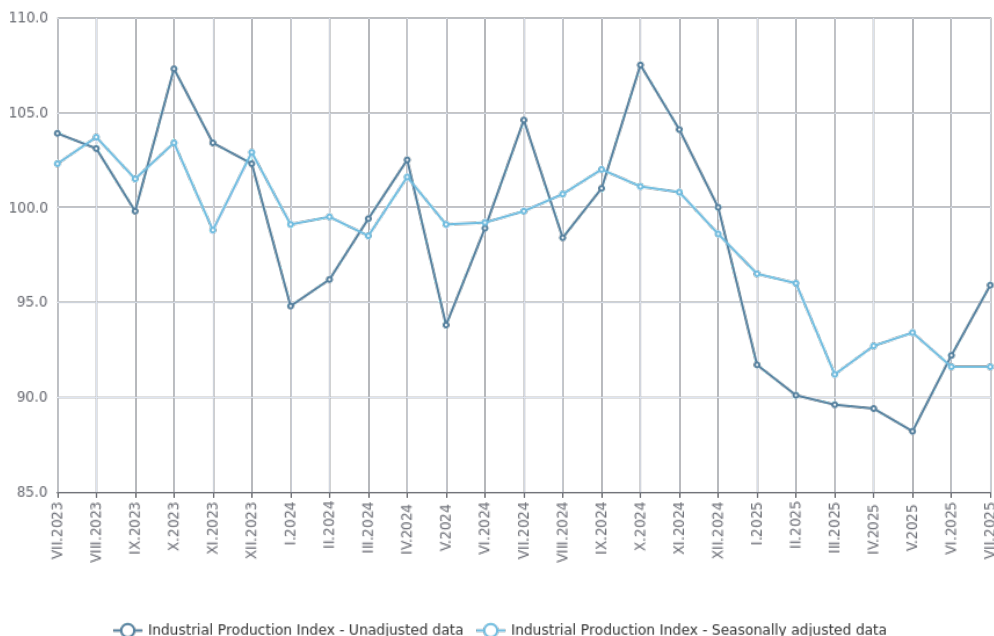




## INDUSTRIAL PRODUCTION INDICES - JULY 2025

The Industrial Production Index in July 2025 remained unchanged compared to the previous month. The data are preliminary and seasonally adjusted. In comparison with July 2024, a decline of 8.3% was registered in the calendar-adjusted Industrial Production Index.

Figure 1. Industrial Production Indices (2021 = 100)



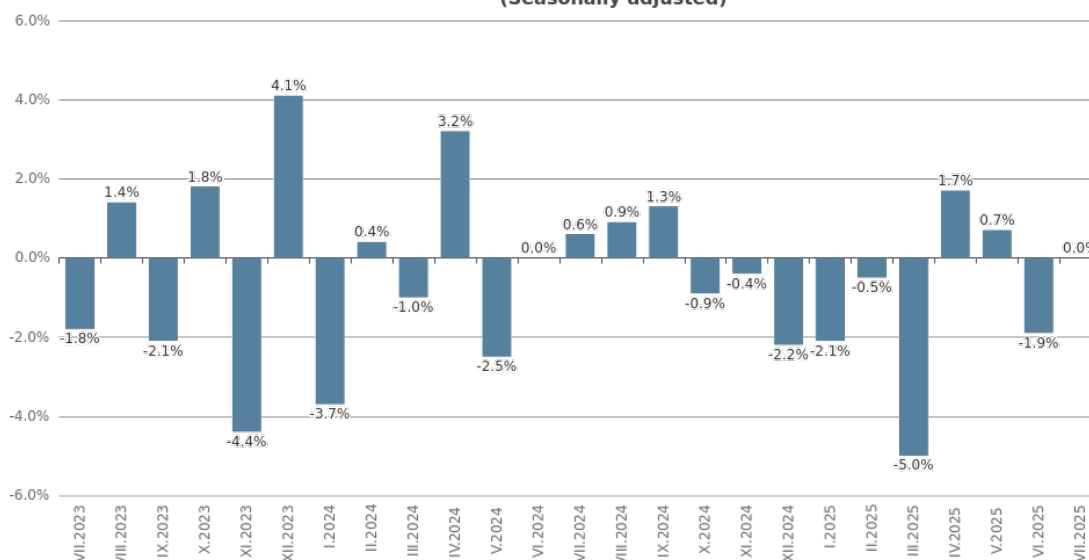
### Monthly changes

In July 2025, compared to the previous month, an increase was seen in the electricity, gas, steam and air conditioning supply - by 2.0%, and in the manufacturing - by 1.8%, while a decline was registered in the mining and quarrying industry - by 11.5%.

More significant rise in the manufacturing was reported in the manufacture of fabricated metal products, except machinery and equipment - by 16.1%, and in the other manufacturing - by 14.6%.

A decrease was seen in the manufacture of other transport equipment - by 17.2%, and in the manufacture of basic pharmaceutical products and pharmaceutical preparations - by 9.7%.

Figure 2. Changes of Industrial Production Indices compared to the previous month (Seasonally adjusted)



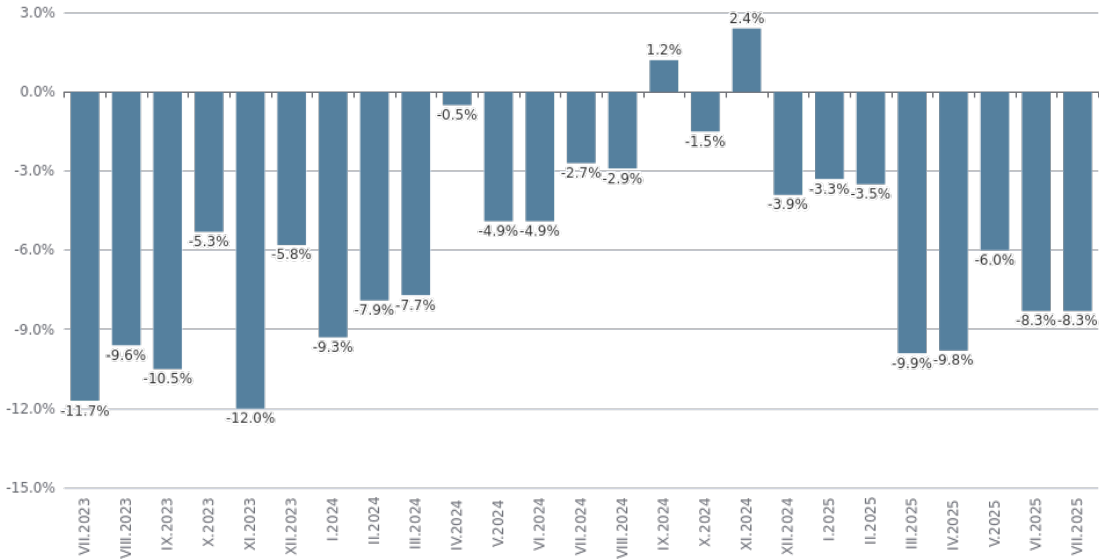
Annual changes

On an annual basis, a drop of the Industrial Production Index was observed in the electricity, gas, steam and air conditioning supply - by 34.9%, and in the manufacturing - by 3.3%, while an increase was registered in the mining and quarrying industry - by 2.1%.

In the manufacturing, a significant decline in production, compared to the same month of the previous year, was seen in the manufacture of paper and paper products, and in the manufacture of other transport equipment - both by 25.8%, in the manufacture of wearing apparel - by 21.0%, and in the manufacture of basic metals - by 19.6%.

A rise was reported in the manufacture of tobacco products - by 34.5%, and in the manufacture of furniture - by 17.6%.

Figure 3. Changes of the Industrial Production Indices compared to the same month of the previous year (Calendar-adjusted)



Methodological notes

The monthly indices of industrial production are calculated in accordance with the requirements of Regulation (EU) 2019/2152 of the European Parliament and of the Council on European Business Statistics.

The Monthly Industrial Production and Industrial Turnover Indices measure changes in production and turnover values of industrial enterprises. This information can be used to access the current economic development and for short-term forecasts. Indices do not measure the actual production level; they aim to measure the average change in the value of production between two points in time. Indices are compiled based on information collected through a representative sampling survey on industrial enterprises. The sample covers enterprises with an annual turnover of more than 97% of the total turnover in the industry.

The Industrial Production Indices are calculated at a constant base year, that is to say they are weighted with the structure of the value added at factor costs in the base year.

Seasonal adjustment is a statistical method which eliminates the seasonal component of the time series.

Calendar adjustment is an adjustment for variations in the monthly data, caused by calendar effects, the different number of calendar and working days in the months, national holidays and outliers (for example, the presence of more non-working days in May could contribute to the decline in production in some activities).

Since July 2024, all dynamic rows have been recalculated based on 2021 as base year and have been published in IS Infostat.

Table 1

Changes of Industrial Production Indices compared to the previous month							
							(Per cent)
Economic activities	NACE.BG - 2008	II.2025	III.2025	IV.2025	V.2025	VI.2025	VII.2025*
<b>Industry</b>	<b>B_TO_E36</b>	<b>-0.5</b>	<b>-5.0</b>	<b>1.7</b>	<b>0.7</b>	<b>-1.9</b>	<b>0.0</b>
<b>Mining and quarrying</b>	<b>B</b>	<b>-6.2</b>	<b>5.6</b>	<b>-1.4</b>	<b>0.9</b>	<b>16.1</b>	<b>-11.5</b>
Mining of coal and lignite	B05	8.7	-37.4	15.6	-4.9	28.5	-24.4
Extraction of crude petroleum and natural gas	B06	..	..	..	..	..	..
Mining of metal ores	B07	-2.6	1.4	-3.5	-4.0	14.9	-4.4
Other mining and quarrying	B08	-21.5	8.9	6.0	-1.8	-3.6	4.4
Mining support service activities	B09	..	..	..	..	..	..
<b>Manufacturing</b>	<b>C</b>	<b>-1.4</b>	<b>-0.4</b>	<b>-1.8</b>	<b>2.0</b>	<b>-2.3</b>	<b>1.8</b>
Manufacture of food products	C10	-7.4	0.9	1.7	0.7	-3.0	1.2
Manufacture of beverages	C11	-2.2	-4.9	1.7	-1.4	-0.9	-3.5
Manufacture of tobacco products	C12	6.7	-1.2	27.4	-12.1	-2.9	1.0
Manufacture of textiles	C13	2.6	-1.0	1.9	-5.0	-7.4	8.0
Manufacture of wearing apparel	C14	-1.0	-4.7	4.0	-5.7	7.2	-8.0
Manufacture of leather and related products	C15	-4.2	-1.9	14.0	-3.9	-3.0	-8.8
Manufacture of wood and of products of wood and cork, except furniture; manufacture of articles of straw and plaiting materials	C16	-3.6	-2.4	-2.6	-4.5	-0.2	-0.7
Manufacture of paper and paper products	C17	3.2	-1.9	-0.9	-3.3	-1.7	3.1
Printing and reproduction of recorded media	C18	-3.2	6.2	-3.1	1.4	1.3	-5.1
Manufacture of coke and refined petroleum products	C19	..	..	..	..	..	..
Manufacture of chemicals and chemical products	C20	-3.5	-0.5	-2.0	7.5	-9.6	4.5
Manufacture of basic pharmaceutical products and pharmaceutical preparations	C21	-8.8	6.7	-5.1	2.4	14.6	-9.7
Manufacture of rubber and plastic products	C22	-0.9	1.1	0.7	-3.0	1.6	-2.9
Manufacture of other non-metallic mineral products	C23	-12.8	4.1	-7.6	11.7	-2.5	2.8
Manufacture of basic metals	C24	3.2	0.6	-3.4	0.6	-3.0	8.9
Manufacture of fabricated metal products, except machinery and equipment	C25	-16.8	12.9	-6.6	1.4	-14.8	16.1
Manufacture of computer, electronic and optical products	C26	17.0	12.4	-17.6	2.9	5.7	-5.8
Manufacture of electrical equipment	C27	-2.5	2.9	9.8	-6.3	-3.0	-2.5
Manufacture of machinery and equipment n.e.c.	C28	5.2	2.5	-7.2	1.4	-1.7	-2.1
Manufacture of motor vehicles, trailers and semi-trailers	C29	-1.1	3.8	-1.0	5.0	-6.3	1.8
Manufacture of other transport equipment	C30	18.6	-32.5	26.5	-7.0	-10.4	-17.2
Manufacture of furniture	C31	12.4	7.9	-7.8	4.3	-7.9	3.1
Other manufacturing	C32	20.0	-15.0	16.2	-0.5	-12.9	14.6
Repair and installation of machinery and equipment	C33	-15.2	-3.8	5.2	-8.6	17.1	0.4
<b>Electricity, gas, steam and air conditioning supply</b>	<b>D</b>	<b>10.7</b>	<b>-43.0</b>	<b>53.9</b>	<b>-8.0</b>	<b>-6.6</b>	<b>2.0</b>
Electricity, gas, steam and air conditioning supply	D35	10.7	-43.0	53.9	-8.0	-6.6	2.0
Seasonally adjusted.							
* Preliminary data.							
„...“ - Confidential data.							

Table 2

Changes of Industrial Production Indices compared to the same month of the previous year							
							(Per cent)
Economic activities	NACE.BG - 2008	II.2025	III.2025	IV.2025	V.2025	VI.2025	VII.2025*
<b>Industry</b>	<b>B_TO_E36</b>	<b>-3.5</b>	<b>-9.9</b>	<b>-9.8</b>	<b>-6.0</b>	<b>-8.3</b>	<b>-8.3</b>
<b>Mining and quarrying</b>	<b>B</b>	<b>-1.6</b>	<b>2.7</b>	<b>-3.7</b>	<b>8.5</b>	<b>26.7</b>	<b>2.1</b>
Mining of coal and lignite	B05	22.4	-52.0	-62.8	-54.8	-35.1	-59.1
Extraction of crude petroleum and natural gas	B06	..	..	..	..	..	..
Mining of metal ores	B07	-14.8	-2.3	-17.5	-5.5	16.9	10.1
Other mining and quarrying	B08	-38.3	-25.7	-21.3	-14.3	-16.2	-12.4
Mining support service activities	B09	..	..	..	..	..	..
<b>Manufacturing</b>	<b>C</b>	<b>-5.6</b>	<b>-4.4</b>	<b>-7.3</b>	<b>-1.3</b>	<b>-7.3</b>	<b>-3.3</b>
Manufacture of food products	C10	-16.7	-15.1	-14.6	-7.1	-14.1	-13.1
Manufacture of beverages	C11	-10.4	-10.4	-15.3	-6.6	-11.5	-15.2
Manufacture of tobacco products	C12	44.5	20.5	49.1	47.7	67.0	34.5
Manufacture of textiles	C13	-19.3	-14.2	-10.8	-18.5	-28.7	-17.3
Manufacture of wearing apparel	C14	-16.2	-19.3	-11.8	-20.0	-13.2	-21.0
Manufacture of leather and related products	C15	-13.7	-8.7	4.4	-0.1	1.5	-8.6
Manufacture of wood and of products of wood and cork, except furniture; manufacture of articles of straw and plaiting materials	C16	-15.4	-12.7	-9.8	-12.0	-12.1	-11.6
Manufacture of paper and paper products	C17	-19.5	-17.2	-23.8	-23.9	-24.5	-25.8
Printing and reproduction of recorded media	C18	-8.2	-1.1	-5.4	-1.5	-4.7	-4.2
Manufacture of coke and refined petroleum products	C19	..	..	..	..	..	..
Manufacture of chemicals and chemical products	C20	-6.0	-6.2	-15.3	-9.1	-24.2	-7.5
Manufacture of basic pharmaceutical products and pharmaceutical preparations	C21	-17.3	-10.1	-8.3	-7.5	14.8	0.7
Manufacture of rubber and plastic products	C22	-0.1	-1.6	-3.1	-4.2	-3.6	-7.1
Manufacture of other non-metallic mineral products	C23	-2.2	10.7	-3.8	24.0	14.5	12.5
Manufacture of basic metals	C24	-36.0	-34.5	-38.7	-36.7	-41.3	-19.6
Manufacture of fabricated metal products, except machinery and equipment	C25	5.6	25.2	8.1	17.3	-3.6	2.4
Manufacture of computer, electronic and optical products	C26	-14.3	24.7	-1.0	7.0	6.7	-3.8
Manufacture of electrical equipment	C27	-11.7	-4.5	20.4	11.5	1.2	-3.7
Manufacture of machinery and equipment n.e.c.	C28	6.7	11.8	5.1	10.4	7.9	6.9
Manufacture of motor vehicles, trailers and semi-trailers	C29	-6.5	5.4	-8.1	7.8	7.4	0.4
Manufacture of other transport equipment	C30	54.6	-27.8	6.1	-1.7	-12.4	-25.8
Manufacture of furniture	C31	11.8	18.3	12.5	18.5	11.7	17.6
Other manufacturing	C32	8.5	-6.6	10.6	12.8	-6.1	11.7
Repair and installation of machinery and equipment	C33	-3.9	-0.9	-13.6	-14.0	3.2	6.6
<b>Electricity, gas, steam and air conditioning supply</b>	<b>D</b>	<b>11.2</b>	<b>-34.5</b>	<b>-12.0</b>	<b>-26.6</b>	<b>-18.1</b>	<b>-34.9</b>
Electricity, gas, steam and air conditioning supply	D35	11.2	-34.5	-12.0	-26.6	-18.1	-34.9
Calendar-adjusted.							
* Preliminary data.							
„...“ - Confidential data							

Table 3

Industrial Production Indices (Seasonally adjusted, 2021 = 100)													
NACE.BG - 2008	VII.2024	VIII.2024	IX.2024	X.2024	XI.2024	XII.2024	I.2025	II.2025	III.2025	IV.2025	V.2025	VI.2025	VII.2025*
B_TO_E36	99.8	100.7	102.0	101.1	100.8	98.6	96.5	96.0	91.2	92.7	93.4	91.6	91.6
B	83.8	102.4	112.0	85.9	87.2	105.4	85.1	79.8	84.3	83.1	83.9	97.3	86.1
B05	58.8	48.4	42.6	19.3	55.2	90.5	39.5	43.0	26.9	31.1	29.6	38.0	28.7
B06	..	..	..	..	..	..	..	..	..	..	..	..	..
B07	99.6	111.2	118.3	107.8	104.7	110.8	99.9	97.3	98.6	95.1	91.4	105.0	100.4
B08	88.6	87.8	81.6	84.6	86.3	79.0	85.6	67.2	73.2	77.6	76.2	73.5	76.8
B09	..	..	..	..	..	..	..	..	..	..	..	..	..
C	104.9	106.9	105.9	107.5	107.4	105.2	103.3	101.8	101.4	99.6	101.6	99.2	101.0
C10	103.6	103.7	103.1	107.9	100.6	99.5	95.6	88.6	89.4	90.9	91.6	88.8	89.9
C11	106.0	105.4	109.2	102.9	99.5	102.7	102.1	99.9	95.0	96.7	95.3	94.5	91.2
C12	69.6	78.7	80.6	77.9	66.2	75.6	86.5	92.3	91.2	116.3	102.2	99.2	100.2
C13	62.5	58.0	72.3	61.0	56.3	56.1	52.4	53.8	53.3	54.3	51.6	47.8	51.6
C14	90.2	88.4	87.8	90.0	92.8	77.9	78.4	77.6	74.0	76.9	72.5	77.8	71.5
C15	61.9	62.7	59.3	67.2	66.8	61.9	63.3	60.6	59.5	67.8	65.1	63.2	57.6
C16	87.6	86.2	92.4	87.7	91.5	92.0	89.9	86.7	84.6	82.4	78.7	78.5	77.9
C17	99.9	91.5	97.6	93.4	91.3	81.7	73.7	76.1	74.7	73.9	71.5	70.3	72.5
C18	91.4	87.8	94.6	92.1	94.5	91.4	90.9	88.1	93.5	90.6	91.9	93.0	88.2
C19	..	..	..	..	..	..	..	..	..	..	..	..	..
C20	100.8	109.7	103.7	98.9	109.9	101.9	97.4	94.0	93.5	91.7	98.5	89.1	93.0
C21	114.3	125.7	108.6	121.0	112.2	120.8	117.3	107.0	114.1	108.3	110.8	127.0	114.7
C22	84.1	83.8	84.8	81.6	86.3	85.3	81.5	80.7	81.6	82.1	79.7	81.0	78.6
C23	94.5	85.8	86.5	91.0	95.7	112.3	113.7	99.1	103.2	95.3	106.5	103.8	106.7
C24	100.3	92.9	100.1	94.6	90.5	71.7	72.3	74.6	75.0	72.5	72.9	70.8	77.1
C25	164.3	175.0	162.1	185.4	171.7	166.8	191.1	159.0	179.5	167.7	170.0	144.9	168.2
C26	105.1	101.6	107.8	104.8	111.6	108.7	92.1	107.7	121.1	99.7	102.6	108.4	102.1
C27	98.8	103.0	98.9	103.5	104.8	96.6	98.5	96.1	98.9	108.5	101.7	98.7	96.2
C28	83.9	92.6	95.0	95.9	89.6	93.1	93.4	98.2	100.7	93.5	94.8	93.2	91.2
C29	116.9	116.5	105.5	98.0	102.3	96.0	113.2	111.9	116.2	115.0	120.7	113.1	115.1
C30	87.5	133.1	100.9	113.3	99.2	105.5	104.1	123.5	83.3	105.4	98.0	87.8	72.7
C31	75.3	81.5	79.4	81.3	79.5	80.8	80.2	90.1	97.3	89.7	93.6	86.2	88.9
C32	116.8	109.7	99.7	130.1	121.8	133.5	110.7	132.9	112.9	131.2	130.5	113.6	130.2
C33	110.6	110.8	121.9	133.9	107.4	113.8	127.4	108.0	103.9	109.3	99.9	117.0	117.5
D	86.2	71.5	89.2	84.4	77.6	62.8	75.8	83.9	47.8	73.5	67.7	63.2	64.5
D35	86.2	71.5	89.2	84.4	77.6	62.8	75.8	83.9	47.8	73.5	67.7	63.2	64.5
* Preliminary data.													
*** Confidential data.													

Table 4

Industrial Production Indices (Calendar-adjusted, 2021 = 100)													
NACE.BG - 2008	VII.2024	VIII.2024	IX.2024	X.2024	XI.2024	XII.2024	I.2025	II.2025	III.2025	IV.2025	V.2025	VI.2025	VII.2025*
B_TO_E36	103.1	98.6	102.7	106.0	104.9	101.7	90.8	90.7	91.8	89.1	89.1	92.9	94.5
B	80.8	101.3	119.5	95.8	92.5	119.3	82.6	75.1	81.8	75.5	76.8	93.9	82.5
B05	51.3	44.0	48.8	40.9	71.6	112.5	55.1	45.4	19.3	9.6	7.9	15.7	21.0
B06	..	..	..	..	..	..	..	..	..	..	..	..	..
B07	87.6	115.5	137.9	109.8	96.3	124.1	92.4	84.8	95.4	90.6	91.4	113.6	96.5
B08	92.4	90.9	86.0	95.7	96.1	78.6	62.8	52.7	69.6	76.1	79.2	78.6	80.9
B09	..	..	..	..	..	..	..	..	..	..	..	..	..
C	108.7	103.6	107.0	115.6	111.3	102.6	93.4	93.1	103.7	98.0	100.7	103.3	105.0
C10	103.2	104.8	106.7	119.7	103.4	103.0	87.3	77.0	88.7	87.6	90.3	89.2	89.7
C11	131.0	129.8	120.3	95.7	90.4	95.0	74.6	72.5	86.4	93.0	97.1	113.1	111.1
C12	87.8	84.7	90.1	82.5	64.3	73.8	52.9	63.4	96.4	127.3	119.4	121.1	118.2
C13	63.0	47.3	73.6	64.6	59.2	51.5	47.5	54.1	56.6	54.0	54.9	50.9	52.1
C14	102.0	82.5	87.0	92.4	95.5	73.8	80.9	77.3	72.4	69.7	65.5	85.0	80.6
C15	68.0	50.8	58.2	74.7	77.4	56.9	62.6	58.5	62.5	67.3	62.0	67.9	62.1
C16	93.6	83.5	95.4	93.9	97.6	86.3	76.1	77.4	85.6	82.7	81.7	82.0	82.8
C17	103.2	85.9	96.7	99.8	95.7	75.1	69.2	70.9	77.0	71.0	71.1	74.0	76.6
C18	90.8	81.1	91.3	98.9	107.0	96.9	81.8	79.5	95.6	89.1	92.0	97.1	87.0
C19	..	..	..	..	..	..	..	..	..	..	..	..	..
C20	101.5	104.6	102.3	99.4	112.4	100.9	91.7	89.2	101.8	92.7	97.8	91.5	93.9
C21	111.2	114.6	100.4	129.4	112.0	127.1	114.0	96.2	125.0	106.2	107.2	141.8	112.0
C22	87.9	79.0	87.6	89.9	88.0	77.4	74.7	75.5	84.6	81.8	79.2	85.5	81.7
C23	102.8	89.8	91.9	101.3	101.8	103.3	84.9	83.3	103.3	96.1	112.9	109.0	115.7
C24	97.3	83.1	95.6	97.8	92.8	65.1	70.9	71.9	80.3	73.1	75.6	72.4	78.2
C25	176.9	173.4	162.4	196.3	189.1	173.3	153.8	139.7	180.7	169.5	166.6	147.3	181.2
C26	109.0	89.8	108.5	117.4	116.6	104.3	85.5	104.7	127.9	96.8	98.7	114.5	104.9
C27	103.2	96.1	101.2	110.3	112.3	86.6	91.6	95.9	102.5	107.9	95.5	106.1	99.3
C28	87.4	81.5	96.7	104.7	94.1	89.5	83.7	95.5	107.7	94.7	92.9	98.1	93.4
C29	107.9	103.6	107.9	105.7	114.2	84.9	115.7	114.9	125.6	114.9	119.4	116.5	108.4
C30	89.0	130.0	97.0	123.5	97.1	89.7	81.5	124.3	81.7	110.4	98.0	91.3	66.1
C31	77.9	77.7	80.4	88.0	84.5	81.6	70.2	83.9	103.1	87.9	93.6	90.7	91.6
C32	117.7	110.0	103.7	144.1	130.0	122.4	95.2	117.3	113.2	127.5	129.1	129.0	131.5
C33	112.0	107.8	128.1	141.5	117.3	150.2	94.3	92.0	103.3	99.3	93.6	120.6	119.3
D	91.9	76.2	77.3	73.8	86.8	81.8	87.2	90.7	53.4	63.4	51.3	52.4	59.8
D35	91.9	76.2	77.3	73.8	86.8	81.8	87.2	90.7	53.4	63.4	51.3	52.4	59.8
* Preliminary data.													
*** Confidential data.													